

Metaleptea

VOLUME 1, NUMBER 1

❖ PAN • AMERICAN ❖
ACRIDOLOGICAL SOCIETY est. 1976 ❖



P • A • A • S

SUMMER 1978

by Theodore H. Hubbell

The Pan American Acridological Society is an international scientific organization with members in 16 different countries. Its purpose is to promote collaborative research and control programs in New World Acridology by bringing interested persons into closer association.

The PAAS held its first meeting at San Martin de los Andes, Neuquen, Argentina, in 1976. The Constitution and By-Laws were approved in 1977. The present Governing Board consists of President S. K. Gangwere, of Detroit, Michigan, U.S.A., President-Elect R. A. Ronderos, of La Plata, Argentina, North American Representative J. E. Henry, of Bozeman, Montana, U.S.A., Central American Representative C. Marquez Mayaudon, of Mexico City, Mexico, South American Representative C. S. Carbonell, of Montevideo, Uruguay, Executive Secretary I. J. Cantrall, of Ann Arbor, Michigan, U.S.A., Co-Editors N. Lafuente Indo, of Valparaiso, Chile, and M. Tyrkus, of Detroit, Michigan, U.S.A., and Clerical Secretary, S. C. Hicks of Detroit, Michigan, U.S.A.

The next of the society's triennial meetings is scheduled to be held at Montanta State University, Bozeman, Montanta, U.S.A., in July of 1979. Subsequent meetings are to alternate between South America and North America.

The publications of the PAAS include a semiannual newsletter entitled Metaleptea and a triennial Proceedings.

PAAS membership is open to all persons, professional or amateur, who have an interest in New World Acridology by virtue of their research, teaching, or other activities. Inquiries may be addressed to Prof. S. K. Gangwere, Department of Biology, Wayne State University, Detroit, Michigan 48202, U.S.A.

When asked to review the current status of the classification of the "Gryllacrididae" I was at first reluctant, for it seemed that there was little to be said except that confusion prevails. But it may be worth while to discuss why this is so, and what needs to be done to establish a reliable phyletic classification of the Ensifera that will include the "gryllacridids."

I said "will include" rather than "of" because the Gryllacrididae (sensu Karny), or Gryllacridoidea, as they are usually ranked nowadays, are not universally accepted as constituting a natural group. There is, in fact, good reason to regard them as a polyphyletic assemblage - a grouping of convenience. The accompanying series of phyletic diagrams (figs. 1-7) illustrates successive attempts to determine relationships within the Saltatoria, beginning with Karny (1921). The first four of these phylogenies were based primarily on wing-venation, and those of Handlirsch (1929-30) and Zeuner (1935) very largely on the venation of fossil forms. In these diagrams the groups assigned by Karny (1931, 1937) to his Gryllacrididae s.l. and related fossil forms are shown in caps.

In Karny's 1921 phylogeny the first fork separates a branch leading to the gryllacridids and gryllids from one giving rise to the tettigoniids and acridids. Except for its treatment of the Tridactylidae and *Cylindrachaeidae* Handlirsch's scheme essentially anticipated Ander's separation of *Caelifera* from Ensifera, assigned the Gryllacrididae s.s. to an indeterminate position near the base of the tree, and treated other "gryllacridid" groups as independent families. Zeuner in 1935 placed some of the "gryllacridids" on the same branch as the

Gryllidae and Tettigoniidae and others as offshoots from the line leading to the Acridoidea; he derived both lineages from primitive "stenopelmatoids" that would by Karny have been placed in the Gryllacrididae. In his later (1939) work he elaborated upon but did not essentially change his earlier views.

In 1931 and again in his 1937 Genera Insectorum work Karny put all of what he considered the more primitive Saltatoria into his comprehensive family Gryllacrididae (s.l.) as subfamilies - Lezininae, Stenopelmatinae, Gryllacridinae, Henicinae, Prophalangopsinae, Schizodactylinae, Deinacridinae and Rhaphidophorinae. This sequence indicates his idea of their relative degree of advancement. In a considerable shift from his 1921 concept he derived not merely the gryllids but also the acridids from unspecified "gryllacridid" ancestors (fig. 4). Because of Karny's prestige as the leading student of the group, and the convenience of following a major monographic treatment, his 1937 classification has long remained standard.

Kjell Ander's admirable 1939 study of relationships among the Ensifera was based largely on the results of his investigations of the internal anatomy of numerous species representing nearly all the higher taxa. External characters, excluding wing venation, were also used. From his abundant data he developed what future work is likely to show to be the most satisfactory of the classifications proposed thus far (fig. 5). Its most controversial feature is the early separation of the Ensifera into grylloid and tettigonioid lineages, implying the independent development in the two stocks of tegminal stridulatory apparatus and tibial sound receptors. All the "gryllacridoids" are placed in the Tettigonioidae, with the Rhaphidophoridae, Schizodactylidae and Gryllacrididae s.s. separate and only distantly related families and the Prophalangopsidae, Stenopelmatidae and

Tettigoniidae more closely allied and constituting the superfamily Tettigoniæomorpha.

Chopard (1949), in a general survey of the Orthoptera, used a classification of the Ensifera (not here diagrammed) in which the "gryllacridids" were treated essentially as Karny had done, but with raised rank; as was proposed by Zeuner, Gryllacrididae became Gryllacridoidea, with Karny's subfamilies raised to families, except for a few that were combined; the Prophalangopsidae became the Prophalangopsoidea. Ragge (1955) presented a phylogeny of the Saltatoria based on wing-venation. In his diagram (fig. 6) he has the Gryllacrididae s.s. coming off the Ensifera stem much before the split between the tettigonioid and gryllid lines, and shows the Schizodactylidae arising from the base of the latter. But in his tabular classification Ragge includes both these families and the wingless Rhaphidophoridae in the Tettigonioidae, and assigns the Stenopelmatinae to the Gryllacrididae.

Lastly, Blackith & Blackith (1968; fig. 7) performed a computerized taxonomic analysis of the relationships of the orthopteroid insects, using 92 characters classed as present or absent. Most of these were anatomical features not used in conventional taxonomy. The resulting diagram includes some associations that will appear ridiculous to most students of Orthoptera; thus the Saltatoria are broken up, with the Caelifera forming one branch of an early furcation and the other leading to the point where the Dictyoptera (blattids and mantids) separate from the stalk of the Ensifera. The latter, as in Ander's classification, divides into Grylloidea and Tettigonioidae, with the Gryllacridae (sensu Karny) and Tettigoniidae included in the last-named superfamily. The more bizarre features of this phylogeny are in large part attributable to the fact that character states found in a very few species were taken as representative of whole subfamilies, families and superfamilies. Thus in

the Ensifera the Gryllacridoidea were represented by one gryllacridid and one rhapsiphorida, the Tettigonioidea by one species of Seginae, and the Gryllodea by two species of Gryllinae; sometimes only a single specimen was examined. Only 24 of the tabulated 92 characters show differences between these major groups, and of these at least 10 are known to be variable within one or more of them. Inability to rate characters for consistency within groups tends to vitiate any conclusions drawn from their distribution.

Inspection of the accompanying diagrams in the light of the above notes will amply demonstrate the confused state of gryllacridoid taxonomy. What needs to be done to improve the situation?

First, I believe that multicharacter analysis is the best means of arriving at an approximation to a true phyletic classification of a group of organisms, in spite of the fact that many pitfalls beset its use, as illustrated in the last of the studies cited above. In theory, if one could be sure that he was dealing with homologous structures and that similarity in detail was the result of common descent, he could arrive at a consistent and accurate phylogeny by taking up one character at a time, in a sequence determined by the extent of the group(s) within which its state is constant. But things are never that simple. There are uncertainties about homologies, about the universality of a character state within a group, about what actually constitutes a character state (finesses of subdivision of differences), and (most subjective of all) what is important and what trivial. No taxonomist of the old school, such as myself, can really persuade himself that all characters should be given equal weight; it goes against all his experience and training. Yet we know that subjective judgement is unreliable and leads to such irreconcilable results as those illustrated in the first six diagrams. One apparent solution is to use as many characters as possible, to determine their states in as many

and experience. The phylogenies thus arrived at can to some extent be tested by seeing how they fit in with the geologic, geographic and climatic framework of the period during which the group has evolved. Other than that of Ander such an attempt has yet to be made for the Ensifera, including the gryllacridoids, and since his time much new information has accumulated and new methods of dealing with it have been developed. I have attempted such an analysis in one group, the Rhapsiphoridae, which I hope to have ready for publication later this year, and Theodore J. Cohn and I plan to continue work along these lines.

Editor's Note: Metalepeta is honored and privileged to have Prof. T. H. Hubbell as a contributor to our maiden issue. The quality of Dr. Hubbell's article provides an excellent standard to uphold.

References

- Ander, K. 1939. Vergleichend-anatomische und phylogenetische Studien über die Ensifera (Saltatoria). Opuscula Entomol., Suppl. II, viii + 306 pp., 172 figs.
Blackith, R. E., and R. M. Blackith. 1968. A numerical taxonomy of orthopteroïd insects. Aust. J. Zool., 16: 111-131, 3 figs.
Chopard, L. 1949. Ordre des Orthoptères, in: P. P. Grassé, Traité de Zoologie, Masson, Paris, Tome IX, Insectes: pp. 617-722, figs. 259-365, 1 pl.
Handlirsch, A. 1929-30. Insecta I, Saltatoria, in: Kükenthal-Krumbach, Handbuch der Zoologie, Berlin, Bd. 4, I Hälfte, pp. 692-750.
Karny, H. H. 1921. Zur Systematik der Orthopteroïden Insekten. Treubia, 1 (4):

163-269, 25 figs., chart.

1937. Orthoptera, Fam.

Gryllacrididae, Sub familiae Omnes. Wytzman, Genera Insectorum, Fasc. 206, 317 pp., 7 pls., 3 figs.

Ragge, D. R. 1955. The wing-venation of the Orthoptera Saltatoria. London, Brit. Mus. (N.H.), 159 pp., 106 figs.

Zeuner, F. 1935. The recent and fossil Prophalangopsidae (Saltatoria). Stylops, 4 (5): 102-8, 7 figs.

1939. Fossil Orthoptera Ensifera. London, Brit. Mus. (N.H.), vol. 1, xiii + 321 pp.; vol. 2, pls.

WHY METALEPTEA ?

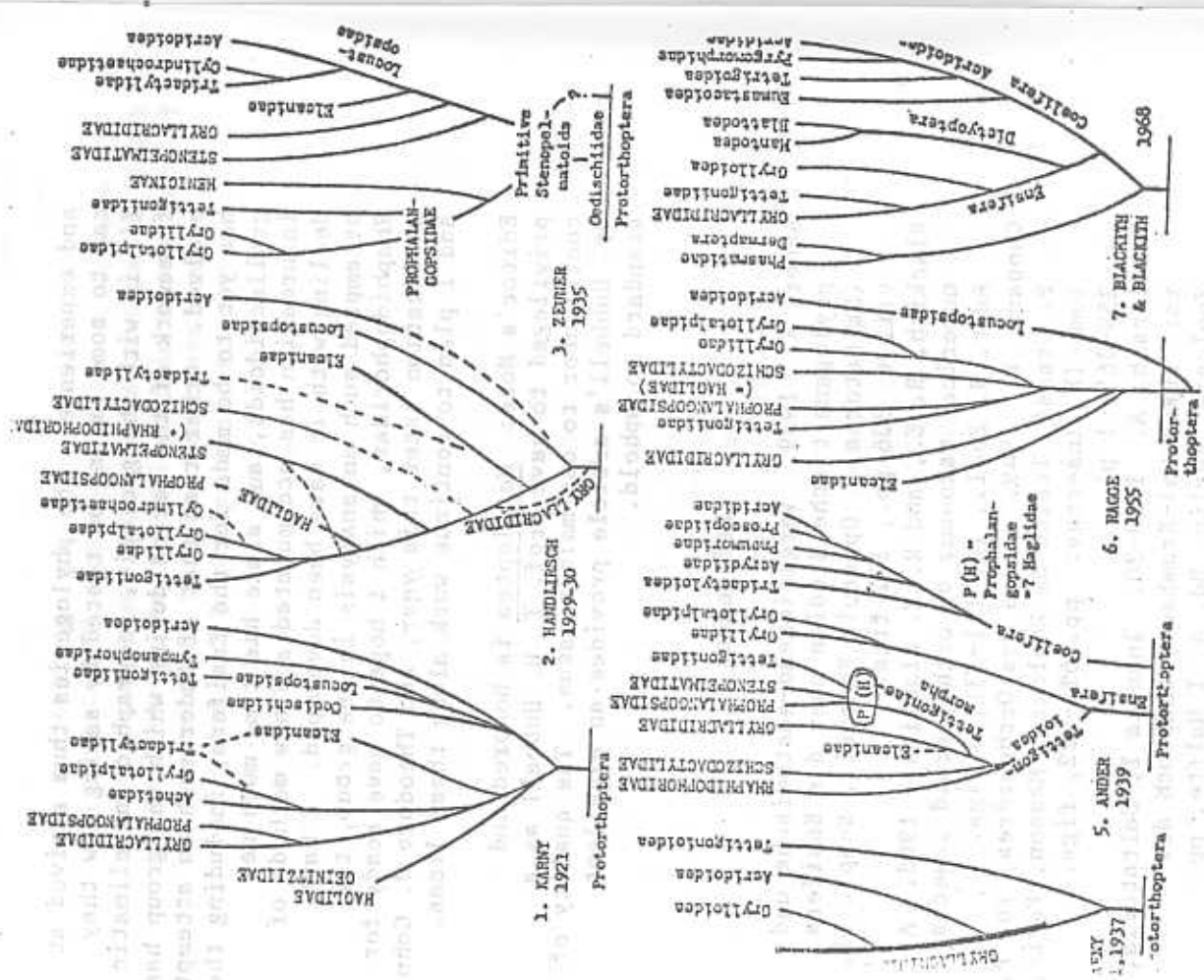
When faced with the task of naming the Newsletter, the editors laboriously sought out some aspect of New World Acridology that would be symbolic of the goals of our society. To these ends, the name Metalep^{te}a was chosen from a host of suggestions. One species of the genus Metalep^{te}a is found distributed from Canada southward all the way through Chile, encompassing a major portion of the New World. What better symbolism of the PAAS and its unifying purpose than the animals shared by all New World Acridologists!

EDITORIAL NOTE

This first number of Metalep^{te}a is being presented in an English edition. Future numbers will, hopefully, include either an accompanying Spanish text or a separate Spanish Edition.

REPORT FROM THE PRESIDENT'S DESK

This is a truly auspicious moment in the



history of PAAS! With the appearance today of this first number of our newsletter, Metaleptea, the society has moved a little closer toward its proclaimed goal of improved communication among New World grasshopper specialists and thereby furthering the discipline Acridology.

The object of any society is to bring together its members. To do so, it has at its disposal two primary vehicles: meetings and publications. Let me address myself briefly to these two.

Scientists can be brought together most effectively at formal meetings during which information is exchanged, the possibilities of collaboration explored, and the participants become acquainted with one another and with their respective research activities. Toward this end, the society held the San Martin, Argentina, seminar in December of 1976; it has scheduled the next seminar for Bozeman, U.S.A., during July of 1979; and it already has the succeeding seminar under active consideration. Progress has been made.

However desirable scheduled meetings may be, no international society can rely solely upon them for all exchange. The geographic distance rules out participation by many members who would like to attend but lack the required funding. Hence the importance of the second vehicle mentioned above, publications. Publications are really the "glue" that binds a society together. We now have this "glue" in the form of the San Martin Proceedings (in press) and in our newsletter, Metaleptea. We have made a beginning on which we may now build. The only question is whether we have all the kinds of "glue" that we need.

Our members presently may turn to any number of fine research journals from throughout the world. However, none (with one exception) focuses on grasshoppers; none is devoted to New World grasshoppers; and most are rapidly pricing themselves beyond the financial means of their contributors and subscribers. This suggests there

is a genuine need for a quality New World acridological journal in which publication is sufficiently inexpensive that all can avail themselves of it whatever their personal financial status or that of their institution. Accordingly, I have named a Publications Committee, chaired by Dr. Roger Bland, of Central Michigan University, charged with the responsibility of, among other things, investigating the desirability of instituting a formal PAAS journal. This committee has been instructed to report its findings to the membership at Bozeman.

In my Annual Report of 1977, mailed to the membership on February 2, 1978, I outlined some of the progress PAAS has made since its inception. Many things have happened since then, but I shall let the report stand for purposes of today's Metaleptea column.

Respectfully submitted,
S. K. Gangwere
President
PAAS

REPORT FROM THE EXECUTIVE SECRETARY'S DESK

To date, the activities of the Executive Secretary have been rather minimal compared to what may be expected in the future. Quite frankly, a good deal of what has been accomplished has been through the auspices of the President's Office where secretarial help and mailing facilities exist. It is often easier to do something than to take the time and energy to seek out the services of another person. For this reason, President Gangwere has carried a good share of my duties as well as his own. This situation speaks to the functional need for the active President to be in close proximity to the active Executive Secretary.

Although just what an Executive Secretary does

depends upon who that person is and who the President at the time happens to be, as well as where both of these officers are located, I envision the activities of the former office much as follows:

- To serve as the main contact for day to day activities of the Society.
- To maintain and keep current the membership roster.
- To handle the finances of the Society.
- To conduct the details of balloting.
- To properly distribute the journal of the Society, if one should eventually develop.
- To maintain a record file of the historical course of the Society.

I am certain that in the future other activities will be assigned by the Executive Committee. Eventually the Office of the Executive Secretary will settle down to fulfill its basic function as the center of the Society's activities.

Respectfully submitted,
Irving J. Cantrall
Executive Secretary

EDITORIAL COLUMN

After several months of preparation the editorial staff has finally succeeded in distributing this first issue of Metaleptra. Though admittedly a little rough at the edges, it is a start and we shall press on from here. The format of this first number will be generally followed in succeeding issues, with additional items added. In future numbers, other distinguished orthopterists will be contributing feature articles in the tradition begun here by

The editorial staff welcomes all comments, suggestions, and criticisms of newsletter content and policy, as well as all contributions (which will be accepted with open arms).

1979 MEETING INFORMATION UPDATE

Plans for next year's meeting (July 23 - August 3, 1979, Bozeman, Montana) are progressing satisfactorily. Since little response was received to the announcement sent to members on November 7, 1977, we hope that you will take a few moments to respond to this. Your input will definitely be valuable to the meeting's success, even though you may not as of yet finalized plans to attend. We hope that everyone will make a determined effort to participate because this will be an interesting and informative meeting.

For those who did not receive the last announcement, we will restate some important points. Bozeman, a small town of nearly 25,000 people, is the home of Montana State University which has an enrollment of about 10,000 students. The meetings are to be held on campus with living facilities (rooms and meals) made nominally available for participants and their families. Commercial housing (motels) is available a short distance off campus with prices somewhat higher. Also for those desiring to camp, excellent public (Forest Service) campgrounds are within 20 to 25 km of campus and private campgrounds are within several minutes drive from campus. Bozeman is served by both Northwest Airlines and Frontier Airlines. The weather is expected to be warm (about 27-29°C daytime, down to 13°C nighttime (during the meetings)).

Below is a suggested list of symposia and discussion topics. Please select the 4 topics you prefer. The two topics receiving the most votes will be symposia topics and the next two will be

discussion topics. An attempt will be made to have the symposia proceedings published. After these topics are decided by your votes, we will arrange for convenors and chairpersons for organizing these sessions. The final topic selections will be reported in the next issue of Metalepeta along with a call for submitted papers. Provisions will be made for as many open paper sessions as required (papers should be 12 minutes in length).

Also on this sheet please indicate if you desire to participate in the field trips. At this time final transportation arrangements are not firm, but we are attempting to provide government vehicles in which event there will be no transportation costs. Any meal and lodging costs encountered on these field trips will be at the participant's expense. Excursions tentatively planned include: a one-day collecting trip to a montane habitat for high elevation species, a full day at Grasshopper Glacier (a mountainous area where migrating grasshoppers have been frozen for many years in the glacial ice), and an extended 5 - 6 day trip visiting different grasshopper regions, such as the inter-mountain shrub-type of Idaho, the short grass prairie-types of Wyoming and Nebraska, and the grassland-types of the Northern Great Plains Region (also on this trip we will observe on-going grasshopper research programs, possibly visit field stations, one or two other Universities, and observe on-going large-scale grasshopper control programs).

Finally, arrangements are under way for a trip through Yellowstone National Park. The park is noted for geothermal attractions (mainly geysers and thermal mud formations) as well as other spectacular natural attractions. This will be either Saturday or Sunday immediately following the meeting and prior to the extended field trips. Transportation costs, which are expected to be very nominal, will depend on the number of persons taking part in the trip.

Please return these forms at your earliest convenience. Also, we would appreciate any additional ideas or suggestions. Use the reverse side of the ballot sheet for comments and suggestions.

MEMBER NEWS AND ACTIVITIES

Irving J. Cantrall, of the University of Michigan, is busy organizing his activities to a full-retirement status. He hopes then to continue research in the short-winged Melanoplina.

William Chapco, University of Regina, is continuing his research into the genetics of grasshoppers, and recently published "Comparison sur la biologie de trois especes de Criquets du genre Ailopus: simulatrix, thalassinus, strepsens" (C.R. Acad. Sc. Paris 285:705-8) jointly with S. Fugeau-Braesch.

Theodore J. Cohn, San Diego State University, has completed (with I. J. Cantrall) the Conalcaeni of northwestern Mexico and is in conjunction with T. H. Hubbell about to embark on a major revision of the classification of the Rhaphidophorinae.

Dra. Lucrecia Covelo de Zolesi, Facultad de Humanidades y Ciencias, Montevideo, is continuing to serve as Professor and Director of the Departamento de Artrópodos at Montevideo, a post she has held for some years. Her current acaridological interests involve the anatomy, ecology, and ethology of the Uruguayan fauna.

S. K. Gangwere, of Wayne State University, is teaching courses in general entomology and insect natural history and, from time to time, is doing a little work for the P.A.S. He is also completing the final draft of a textbook in general entomology. He reports this schedule leaves him little time for research. He is looking forward to next year when, upon completion of the book, he will be able to return to his feeding studies on

the orthopteroid insects.

Ashley B. Gurney, Systematic Entomology Laboratory (USDA), attended the 1977 meeting of the ESA. He is awaiting publication in 1978 of an extensive report dealing with the lava-tube Gryllidae of Hawaii and has just recently (along with Frank W. Fisk) completed a review of the cockroaches likely to infest food.

Herbert Knutson, Kansas State University, is currently investigating the physical and phytochemical factors which restrict the acridid Hypochlora alba to Artemisia ludoviciana (Louisiana Sagewort) (no other acridid species can mature when restricted to this plant). In 1977 A. H. Bajoi and he published on this problem: "Effect when restricting an acridid species to a specific plant species" (Acrida 6:219-229).

Dr. Miguel A. Monne, of the Museu Nacional, Rio de Janeiro, informs us that he was able to publish a notice of the foundation of PAAS in the last number of the Revista brasileira de Entomologia. We are glad to learn of this extra publicity and acknowledge his kindness in helping us. Dr. Monne also mentions that Dr. Campos Seabra and he are amassing a collection of Brazilian Acridoidea in collaboration with PAAS members C. Carbonell and M. Descamps. Presently it is comprised of numerous species with especial emphasis in its representation of the tree-dwelling Omattolampinae and Ophthalmolampinae. The collection is temporarily housed at Dr. Seabra's residence but, when ready, will be incorporated into the collection at the Museu Nacional.

Owen Olfert, University of Saskatchewan, is pursuing doctoral study into the assessment of grasshopper feeding on small grain crops in Saskatchewan.

Prof. Luiz Soledade Otero, Universidade Federal do Rio de Janeiro, is engaged in research on the systematics, biology, and ecology of the rich fauna of Neotropical Phaneropterinae.

H. R. Roberts, Academy of Natural Science of Philadelphia, has completed "A revision of the Tribe Leptysmini, except the genus Cylindrotettix (Orthoptera: Acrididae: Leptysminae (Proc. Acad. Nat. Sci. Phila., 129:33-69). Dr. Roberts recently returned from a mid-winter collecting trip to the Dominican Republic.

Dr. D. C. Rentz recently left the California Academy of Sciences to take a new position in the Division of Entomology, CSIRO, Australia. Accordingly, Dr. Rentz is shifting his systematic investigations to the Australian fauna at the same time as he winds up his vigorous program of general orthopterological studies on the United States fauna.

Hugh Fraser Rowell, University of California, is conducting detailed neurophysiological and behavioral studies of Schistocerca compound eyes and ocelli, in addition to in depth studies into the systematics and ecology of acridids found in neotropical rain forests.

Ernest R. Tinkham, College of the Desert, is continuing his research on Stenopelmatine crickets, Decticine katydids, and other desert orthoptera. He is intimately involved in teaching two unique courses entitled Desert Life and Exploring the Legends of Lost Treasures and Mines. In addition Dr. Tinkham's busy schedule included participation in the first Sand Dune Symposium held at Sacramento, California (1977).

Thomas J. Walker, University of Florida, is studying geographic variation in the life cycles of the cricket genus Gryllus as a part of his ongoing investigation into the systematics of North American and West Indian Gryllidae and Tettigoniidae.

Prof. Sergio Zapata Cerda, who teaches invertebrate zoology at the Departamento de Biología, Universidad de Chile, is continuing with the development of a new collection of Chilean Acridoidea to replace the collection that was

Zapata's current research is mostly with the biology of the grasshopper Moluchacris cinerascens (Ph.) Rehn, but he is continuing with his general work on the acridoids and the phasmids of Chile.

ANNOUNCEMENT

D. Keith McE. Kevan, of McGill University, informs the editors that his "Suprafamilial classification of orthopteroid and related insects, applying the principles of symbolic logic---a draft scheme for discussion and consideration," which he read at the XVth International Congress of Entomology, Washington, D.C., U.S.A., in August, 1976, is still available in limited quantity and may be obtained by writing him at the Department of Entomology. He also notes that the entire symposium of which his paper was a part is available through the Lyman Entomological Museum and Research Laboratory, Macdonald Campus, McGill University, Ste. Anne-de-Bellvue, Quebec, Canada, HOA 1C0. This symposium, entitled "The Higher Classification of the Orthopteroid Insects," and appearing as Memoir 4, includes contributions by V. R. Vickery, D. R. Ragge, N. D. Jago and himself.

Research Requests

Wanted: Live eggs of local Melanoplus sanguinipes populations and reprints or informal observations of genetics of Acridids. Please contact William Chapco, Department of Biology, University of Regina, Regina, Saskatchewan, Canada.

Wanted: Correspondence on and specimens of conalcaeine grasshoppers and camel crickets. Would particularly like to learn of plans of orthopterists for field

work during which they might collect these for us. Will be happy to furnish information on localities, habitats, special collecting techniques and methods of preservation. Please contact Theodore J. Cohn, Department of Zoology, San Diego State University, San Diego, California 92182, USA.

Wanted: Jerusalem crickets of the genus Stenopelmatus and related genera such as Ammopelmatus Tinkham from sand dune areas, desert Acrididae and Decticinae - of rare sorts. Please contact Ernest R. Tinkham, 81-441 Date Palm Avenue, Indio, California, 92201, USA.

Logo Request

A society is judged by and remembered by the image it projects. One way that we can aid granting agencies, other organizations, institutions and prospective members is by creating and circulating an appropriate emblem that can be identified with us. To these ends we invite the artistically inclined among us to try their hand at the design of a suitable logo. In the words of our president, Dr. S. K. Gangwere, "One can visualize, for example, a locust straddling the new world, a grasshopper on a blade of grass, etc. The possibilities are limitless." The cover of this issue of Metalepeta is adorned with an artistic design submitted by Dr. Daniel Otte.

Designs should be submitted to the Executive Secretary Irving Centrall, Museum of Zoology, University of Michigan, Ann Arbor, Michigan 48109, U.S.A.

1978 PAAS MEMBERSHIP LIST

- Dr. M. Descampé††† e
Laboratoire d'Entomologie générale
et appliquée
Muséum national d'Histoire naturelle
45 bis Rue de Buffon
Paris 75005, FRANCE
- Division Director e
Division of International Programs
National Science Foundation
Washington, D. C. 20550
- Ing. Enrique Durón Avilén* e
OIRSA
Calle a Santa Yecia
Apartado Postal (01) 61
San Salvador, EL SALVADOR, C.A.
- Anthony Dajnowicz†† e
Department of Pediatrics
School of Medicine
Wayne State University
3901 Beaubien
Detroit, Michigan 48201
- Mr. Martin A. Erlanson** e
Department of Biology
Rm. 325 W. P. Thompson Bldg.
University of Saskatchewan
Saskatoon, Saskatchewan S7N 0A0
CANADA
- Ing. Leopoldo Esquivel* e
Secretaría de Agricultura y Ganadería
de la Nación
Pasaje Colón 922
Buenos Aires, ARGENTINA
- Dr. Al B. Ewen* e
Research Branch, Agriculture Canada
107 Science Crescent
University of Saskatchewan
Saskatoon, Saskatchewan S7N 0X2
CANADA
- St. Dr. Oscar de Ferraz††† e
Museo Regional de Ciencias
Naturales y Humanas
Universidad Nacional del Comahue
Ar. Buenos Aires 1600
Neuquén, ARGENTINA
- Dr. Francisco Carrasco Z. *
Facultad de Agronomía
Universidad Nacional del Cuzco
Cuzco, PERU
- Prof. Francisco Cerda *
Instituto de Zoología Agrícola
Facultad de Agronomía, U.C.V.
Apartado 4,579
Maracay, Aragua, VENEZUELA
- Library
Centre for Overseas Pest Research
College House, Wrights Lane
London W8 3SJ, ENGLAND
- Dr. William Chapco* e
Department of Biology
University of Regina
Regina, Saskatchewan
CANADA
- Dr. Eric L. Charnov* e
Department of Biology
University of Utah
Salt Lake City, Utah 84112
- Jose Rdez Cintron** e
Department of Life Sciences
Sam Houston State University
Huntsville, Texas 77340
- Dr. Theodore J. Cohn* e
Department of Zoology
San Diego State University
San Diego, California 92182
- Dr. Stanley Coppock Jr.* e
Extension Entomologist
Department of Entomology
Oklahoma State University
Stillwater, Oklahoma 74074
- Sra. Dra. Lucrecia Covello de Zolassi* e
Departamento de Artrópodos
Facultad de Humanidades y Ciencias
Casilla de Correos 1240
Montevideo, URUGUAY
- Dr. Matt E. Dakin* e
Box 4-1435
University of Southwestern Louisiana
Lafayette, La. 70504
- Dr. Francisco Carrasco Z. *
Facultad de Agronomía
Universidad Nacional del Cuzco
Cuzco, PERU
- Prof. Fariduddin Ahmad* e
Department of Plant Protection
Jinnah Avenue --- Mair Halt
Karachi 27, PAKISTAN
- Prof. Mohammad Karimuddin Ahmad* e
Department of Plant Protection
Jinnah Avenue --- Mair Halt
Karachi 27, PAKISTAN
- Ing. Pedro Alcalá Calogues* e
Estación Experimental Agraria de La
Sierra Central
Calle Real, 507 El Tambo
Apartado 411
Huancayo, PERU
- Dr. N. L. Anderson* e
Dept. of Biology
Montana State University
Bozeman, Montana 59715
- Sra. Dra. Mirta Olga Arriaga* e
Facultad de Ciencias Naturales y Museo
Universidad Nacional de La Plata
Pasaje del Bosque 1,900
La Plata, ARGENTINA
- Dr. A. H. Barnum, Director e
Division of Biological Sciences,
Dixie College
St. George, Utah 84770
- Dr. W. Y. Barr e
Department of Entomology
University of Idaho
Moscow, Idaho 83843
- St. Dr. Mauricio Barreta* e
Servicio Nacional de Sanidad Vegetal
Inspección Regional SEBRA
Hatti 117-4000
San Miguel de Tucumán, ARGENTINA
- St. Dr. Claudio Juan Bidau* e
Facultad de Ciencias Exactas y Naturales
Universidad de Buenos Aires
Ciudad Universitaria, 1,428 Hukex
Capital Federal, ARGENTINA
- Dr. R. C. Bland* e
Department of Biology
Central Michigan University
Mount Pleasant, Michigan 48859
- Dr. Marilyn A. Beuten* e
Department of Entomology
University of Idaho
Moscow, Idaho 83843
- Ing. Roberto Buchuc* e
Escuela Forestal
Universidad Nacional del Comahue
San Martín de los Andes
Neuquén, ARGENTINA
- Dr. George N. Buxton e
Bureau of Entomology
Department of Agriculture
1220 N. Street
Sacramento, California 95814
- St. Dr. Miguel Campodónico* e
INTA
Rivadavia 1439
Buenos Aires, ARGENTINA
- Dr. Irving J. Central††††† e
Museum of Zoology
University of Michigan
Ann Arbor, Michigan 48109
- Ing. Carlos S. Carbonell††††† e
Casilla de Correos 490
Montevideo, URUGUAY
- Dr. Horacio Cardoso* e
Instituto de Investigaciones
Biológicas "Clemente Estable"
Avenida Italia 3318, P.O. Box 2363
Montevideo, URUGUAY

- Dr. Amilton Ferreira*
Departamento de Morfologia Animal
Faculdade de Filosofia,
Ciencias e Letras
Cx. P. 178
13,500 Rio Claro, S. P.
BRAZIL
- Dr. James J. Friauf*
Department of Biology
Vanderbilt University
Nashville, Tennessee 37203
- Dr. S. K. Gangwere*
Department of Biology
Wayne State University
Detroit, Michigan 48202
- Dr. Mario Gentili*
Museo Patagónico de Ciencias Naturales
San Martín de los Andes
Menquén, ARGENTINA
- Dr. J. S. Gills*
ACPP c/o FAD
Via delle Terme di Caracalle
Rome 00100
ITALY
- Dr. Cedric Gillois*
Department of Biology
University of Saskatchewan
Saskatoon, Saskatchewan S7N 0W0
CANADA
- Sra. Dna. Margarita de Gonzáles
Biblioteca
Instituto Zoológico Agrícola
Facultad de Agronomía, U.C.V.
Apartado 4579
Maracay, Aragua, VENEZUELA
- Sra. Dna. Rosa Guerra Muñoz*
Facultad de Matemáticas y
Ciencias Naturales
Universidad de Chile
Casilla 130-V
Valparaíso, CHILE
- Dr. A. W. Curry*****
Systematic Entomology Laboratory
BESA c/u V. S. National Museum
Washington, D. C. 20560
- Dr. J. E. Henry*
USDA Rangeland Insect Laboratory
c/o Montana State University
Bozeman, Montana 59715
- Prof. G. B. Hewitt*
U. S. D. A., A. E. S.
Rangeland Insect Laboratory
Montana State University
Bozeman, Montana 59715
- Dr. John R. Hilliard Jr.*
Department of Life Sciences
Sam Houston State University
Huntsville, Texas 77340
- Dr. Theodore H. Hubbell**
Museum of Zoology
University of Michigan
Ann Arbor, Michigan 48109
- Mr. Pal Hubert**
Uri utca 38
M-1,014, Budapest
HUNGARY
- Dr. N. D. Jago*
Centre for Overseas Pest Research
College House
29 Wrights Lane
London W. 8 5EJ, ENGLAND
- Dr. J. W. Kamp*
Science Education Department
University of British Columbia
Vancouver 8, British Columbia
CANADA
- Dr. Alan Roy McGeffer*
Centre for Overseas Pest Research
College House, 29 Wrights Lane
London W. 8 5EJ, England
- Dr. D. Keith McE. Kevan***
Department of Entomology and
Lyman Entomological Museum
McDonald College
Box 268, MacDonald College
Ste. Anne-de-Bellevue R00
P. Q., CANADA H9A 1C0
- Dr. Herbert C. Knutson*
Department of Entomology
Kansas State University
Manhattan, Kansas 66506
- Dra. Nelly Lafuente Indio*
Facultad de Matemáticas y
Ciencias Naturales
Universidad de Chile
Casilla 130-V
Valparaíso, CHILE
- Dr. R. Lavigne*
University of Wyoming
Box 3354, University Station
Laramie, Wyoming 82071
- Dr. José Liebermann***
José Hernández 2450 64B
Buenos Aires, ARGENTINA
- Mr. C. N. Lietzau*
Department of Biology
Wayne State University
Detroit, Michigan 48202
- Sra. Sonia Maria Rodrigues Lopes*
Museu Nacional
Universidade Federal do Rio de Janeiro
Rio de Janeiro, BRAZIL
- Sra. Dna. Georgina Cecilia Luma*
Facultad de Ciencias Naturales y Museo
Pasaje del Bosque s/n
La Plata, ARGENTINA
- Sra. Dna. Graciela Maroggiani de Sialer*
Departamento de Patología Vegetal
CICA, INTA 1712
Castelar (Villa Udaondo), ARGENTINA
- Dr. Carlos Márquez Mayaudon*
Instituto de Biología
Universidad Nacional Autónoma
Apartado Postal 70 - 233
México 20, D. F.
MEXICO
- Dr. Alejo Mesa*
Faculdade de Filosofia,
Ciencias e Letras
Rio Claro 13,500, S. P.
BRAZIL
- Mr. T. P. Monaghan**
Department of Biology
Wayne State University
Detroit, Michigan 48202
- Dr. Woodrow W. Middlekauff*
Department of Entomology
University of California
Berkeley, California 94720
- Dr. Miguel A. Zimmt*
Museu Nacional
Quinta da Boa Vista
Rio de Janeiro 20,000
BRAZIL
- Sr. Dn. E. Morales Agacino*
Instituto Nacional Investigaciones
Agronomicas
Avenida de Puerta de Hierro
Madrid 3
SPAIN
- Dr. Mukul K. Mukerji*
Research Station, Agriculture Canada
107 Science Crescent
Saskatoon, Saskatchewan S7N 0X2
CANADA
- Dr. G. B. Milkern*
Department of Entomology
North Dakota State University
Fargo, North Dakota 58102
- Dr. B. Nagy*
Research Institute for Plant
Protection
H - 1525 Herman Otto u. 15
Budapest, HUNGARY
- Dr. M. L. Molaon*
31161 Old Stage Road
Birmingham, Michigan 48010

- Mr. Owen G. Olfert** e
Department of Zoology
University of Saskatchewan
Saskatoon, Saskatchewan S7N 0W0
CANADA
- Dr. J. A. Onnager* e
Bangladesh Insects Laboratory, A. R. S.
Montana State University
Bozeman, Montana 59715
- Sr. Do. Paynelo Orrego Aravena* e
Museo Provincial
6300 Santa Rosa
La Pampa, ARGENTINA
- Dr. Luiz Soledade Otero* e
Av. Sernambetiba 4216, Q. 5, Casa 42
Barra da Tijuca
Rio de Janeiro, BRAZIL
- Dr. Daniel Otte* e
Department of Entomology
Academy of Natural Sciences
19th and the Parkway
Philadelphia, Pennsylvania 19103
- Ing. Alfonso S. Paravano* e
Laboratorio Fitosanitario
Ministerio de Agricultura y
Ganadería
Santa Fe, ARGENTINA
- Dr. R. E. Pfadt* e
Entomology, Box 3354
University of Wyoming
Laramie, Wyoming 82071
- Dr. R. Pickford e
Canada Agricultural Research Station
Saskatoon, Saskatchewan
CANADA S7N 0X 1
- Ing. R. Quintanilla* e
Facultad de Agronomía
Universidad de Buenos Aires
Buenos Aires, ARGENTINA
- Dr. Suresh Kumar Raina* e
Research Station, Agriculture Canada
107 Science Crescent
Saskatoon, Saskatchewan S7N 0X2
CANADA
- Dr. Robert L. Randall e
Metador Project
G. P. Bldg.
University of Saskatchewan
Saskatoon, Saskatchewan
CANADA
- W. E. Rees* e
USDA Rangeland Insect Laboratory
c/o Montana State University
Bozeman, Montana 59715
- Dr. D. C. F. Reutz* e
Division of Entomology
CSIRO, Box 1,700
Canberra, ACT, AUSTRALIA
- Dr. P. W. Riegert e
University of Regina
Regina, Saskatchewan
S4S 0A7, CANADA
- Dr. H. E. Roberts** e
Academy of Natural Sciences
19th and the Parkway
Philadelphia, Pennsylvania 19103
- Dr. Ricardo A. Ronderos* e
Facultad de Ciencias Naturales y Museo
Universidad Nacional de La Plata
Paseo del Bosque 1900
La Plata, ARGENTINA
- Sr. Do. J. A. Rosas Costa e
José Luis Cantilo 3722
Buenos Aires 19, ARGENTINA
- Dr. Hugh Fraser Rowell* e
Department of Zoology
University of California
Berkeley, California 94720
- Srta. Dna. Norma Elba Sanchez* e
Facultad de Ciencias Naturales y Museo
Paseo del Bosque s/n
La Plata, ARGENTINA
- Dr. J. D. Spooner* e
Aiken Campus
University of South Carolina
Aiken, South Carolina 29801
- H. S. Thomas e
4501 Winterset Drive
Columbus, Ohio 43220
- Dr. Ernest R. Tinkham* e
81-441 Date Palm Avenue
Indio, California 92201
- Sr. Do. S. de Toledo Pizsa* e
Escuela Superior de Agricultura
Luiz de Queiroz
Universidade de Sao Paulo
Piracicaba
Sao Paulo, BRAZIL
- D. W. Tomlyn** e
Department of Biology
Princeton University
Princeton, N.J. 08540
- Srta. Dna. Sonia Z. Turk* e
Instituto Miguel Lillo
Miguel Lillo 205-6009
San Miguel de Tucuman, ARGENTINA
- Dr. Michael Tyrküs* e
Department of Pediatrics
School of Medicine
Wayne State University
3901 Beaubien
Detroit, Michigan 48201
- Dr. D. N. Ueckert* e
Agricultural Research &
Extension Center
Texas A. & M. University
Rt. 1, Box 950
San Angelo, Texas 76901
- Dr. D. Van Horn e
Colorado Springs Centet
Crimmer Road
Colorado Springs, Colorado
- Ing. Francisco H. Satoro* e
Departamento de Patología Vegetal
CICA, INTA, 1712
Castelar (Villa Udeondo), ARGENTINA
- Dr. K. S. Sastry* e
2737 Roundtree Drive
Troy, Michigan 48064
- Jenise T. Saucier* e
Agriculture Research Station
107 Science Crescent
University of Saskatchewan
Saskatoon, Saskatchewan S7N 0X2
CANADA
- Dr. G. L. Schroeter* e
Department of Biology
Texas A & H University
College Station, Texas 77843
- Dr. G. C. E. Scudder e
Department of Zoology
University of British Columbia
Vancouver 8, British Columbia
CANADA
- Dr. Abdallah Ould M. Sidia e
Organisation Commune de Lutte
Antiacridienne et de Lutte
Antivivaire
Dakar, SENEGAL
- Sherilyn F. Smith* e
Department of Entomology
Kansas State University
Manhattan, Kansas 66506
- Sr. Do. J. Solericens A. e
Departamento de Biología
Area de Matemáticas y Ciencias
Naturales
Universidad de Chile
Casilla 130 - V
Valparaiso, CHILE

Dr. Anthony Ventre *
9409 Dangerfield Road
Clinton, Maryland 20735

Dr. Vernon R. Vickery* e
Department of Entomology and
Lyman Entomological Museum
Ste. Anne-de-Bellvue 800
P. Q., CANADA HDA 1C0

Sra. Dna. Leonor C. de Villalobos*
Facultad de Ciencias Naturales y Museo
Universidad Nacional de La Plata
Paseo del Bosque 1900
La Plata, ARGENTINA

Dra. Hilda Elda Viria de Arguello*
Facultad de Ciencias Exactas,
Físicas y Naturales
Universidad Nacional de Córdoba
Avda. Veleg Sarsfield 299
5,000 Córdoba, ARGENTINA

Dr. Saraice Viasher* e
Department of Biology
Montana State University
Bozeman, Montana 59717

Dr. T. J. Walker* e
Dept. of Entomology
University of Florida
Gainesville, Florida 32611

Dr. R. B. Willey* e
Department of Biological Sciences
University of Illinois at Chicago Circle
P. O. Box 4348
Chicago, Illinois 60680

Dr. J. Z. Willo *
Estación Experimental Agrícola de
La Molina
Apartado 2791
Lima, PERU

Sr. Dn. Enrique Ramón Zamorano Ponce**
Facultad de Matemáticas y Ciencias Naturales
Universidad de Chile-Sede de Valparaíso
Casilla 130-V
Valparaíso, CHILE

Sr. Dn. Sergio Zapata Cerda* e
San Diego 245
Depto. 205
Santiago, CHILE

* Active Member
** Student Member
*** Honorary Member
**** Emeritus Member

* Spanish Language preference
e English language preference

The PAAS is deeply indebted to Chairman John D. Taylor and the Department of Biology at Wayne State University for gracious assistance in the preparation of this issue of Metaleptra.